

TAILORED JACKET

Men's Tailoring: Spring 2017

Daniel Bailin



1

Using mostly the Cabrera method I built a bespoke jacket for graduate actor Daniel Bailin. His long arms and 34 chest make traditional suits in his size hard to find. This jacket was modified from a commercial pattern.

(1) The padstitching along the lapel and roll line.

(2) The jacket front in process of being taped.



2

Final



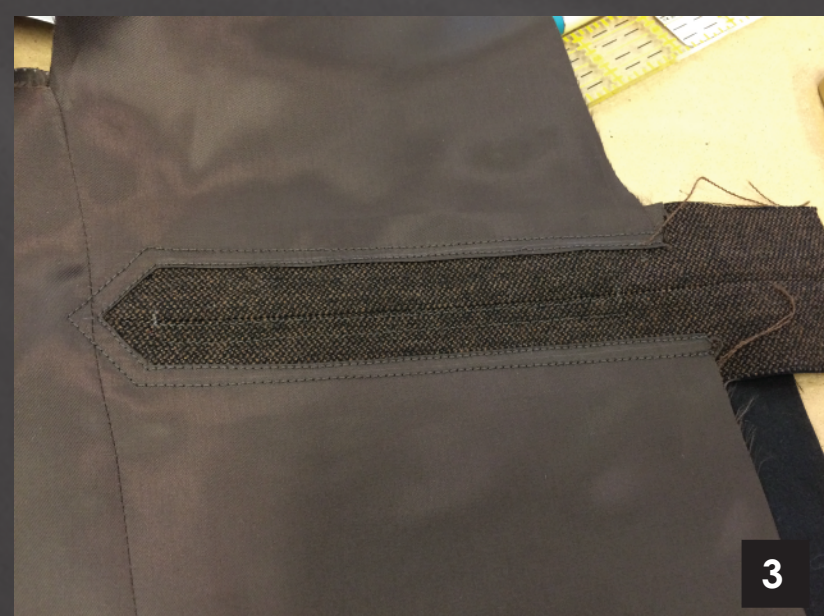
In the fabric fitting alterations were made around the back neck, necessitating some changes to the collar pattern. There were also changes to the armhole opening and the sleeve length.

(3) The interior breast pocket.

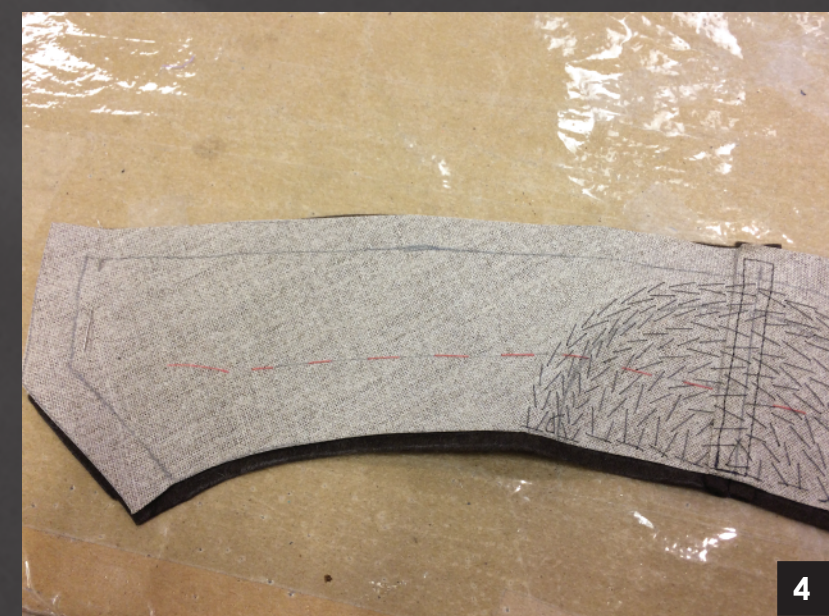
(4) Padstitching of the undercollar to hymo.

(5) Finished Interior show of coat back.

Fabric Fitting



3



4



5